



APRILE 50
YEARS OF EXCELLENCE

COMPANY OVERVIEW

Aprile is an **international logistics provider with 50 years of experience** in global supply chains. Founded in Genoa, Italy, a historic maritime hub, the company has grown through **long-term customer partnerships** and a focus on **quality, innovation, and operational excellence**.

Today, we provide flexible logistics for evolving commercial and industrial needs worldwide. **Clear, transparent communication** and a culture of continuous improvement allow us to deliver **consistent performance and trusted support** across every stage of the logistics journey.





OUR VALUES

COOPERATION

We work closely with our customers to understand their needs and **build solutions** that support their commercial and operational goals.

FAIRNESS

We offer **transparent, competitive services** while maintaining **high standards of quality and reliability**.

TRUST

We build long-term partnerships through **honest communication** and **consistent performance** our customers can rely on.

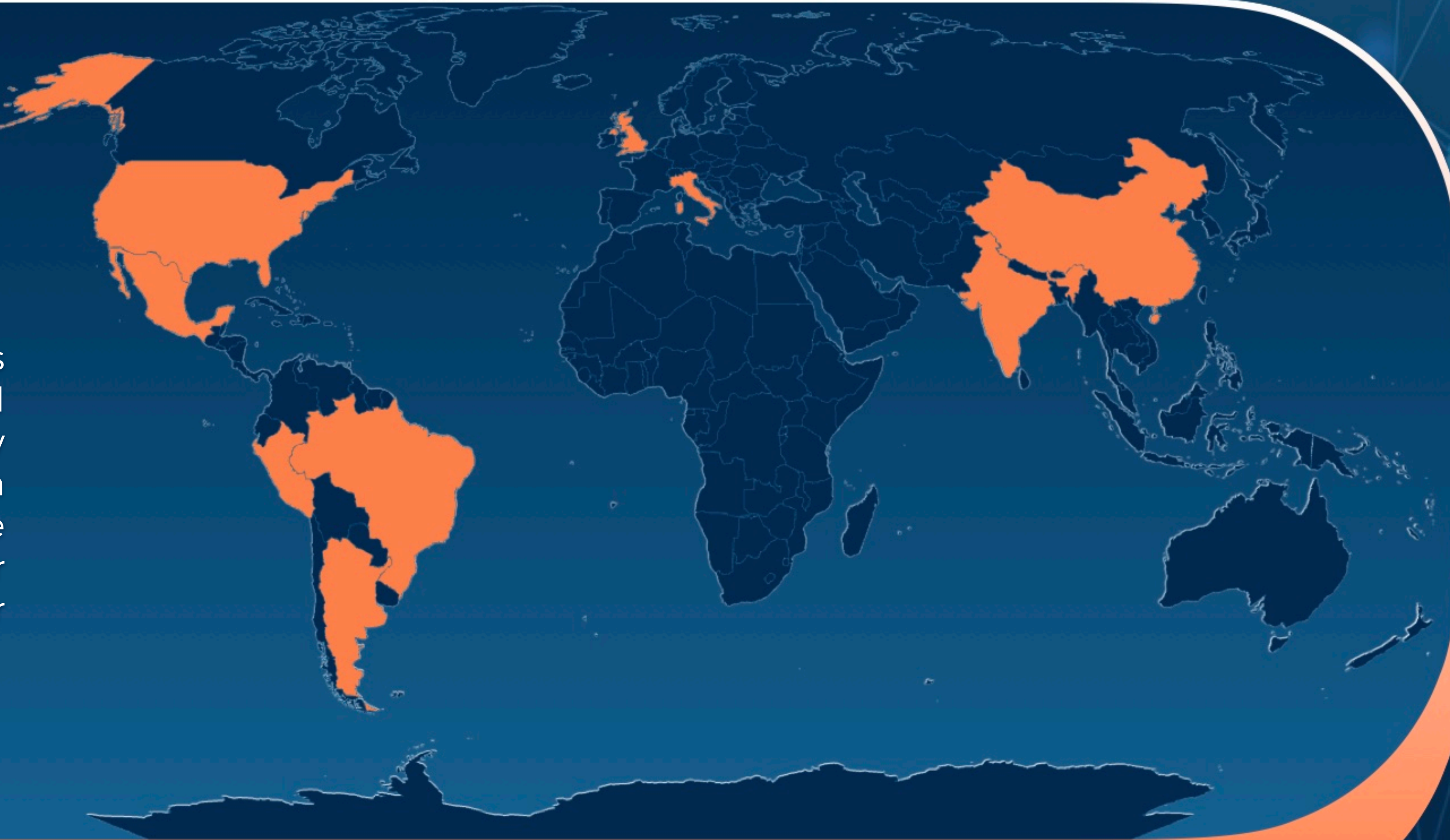
RESPONSIBILITY

We take ownership of every shipment and **act in the best interest of our customers**, ensuring care, accuracy, and accountability in all we do.

OUR GLOBAL NETWORK

Our network provides customers with **local expertise** and **coordinated support** across key international markets. With **28 offices worldwide**, we respond quickly and deliver consistent service wherever our customers operate.

USA • MEXICO • BRAZIL • ARGENTINA • PERU • UK • ITALY • INDIA • CHINA



MADE IN ITALY

Italy's industrial districts lead global manufacturing in sectors such as fashion, furniture, design, automotive, industrial machinery, biomedical production, technology, raw materials, as well as food and beverage. **With offices positioned across key regions, Aprile supports local industries** with tailored logistics solutions **that connect Italian excellence to global markets.**

LOMBARDY

THE ENGINE OF ITALIAN INDUSTRY, DEFINED BY SCALE, DIVERSITY, AND INNOVATION

PIEDMONT

HOME TO TECHNICAL MASTERY AND LONG-STANDING PRODUCTION TRADITIONS

TUSCANY

DESIGN-CENTERED MANUFACTURING BLENDING HERITAGE AND MODERN CRAFT

CAMPANIA | APULIA | SICILY

FOOD PROCESSING, REGIONAL PRODUCTION, AND EMERGING LOGISTICS CORRIDORS

THE NORTHEAST

ONE OF EUROPE'S DENSEST NETWORKS OF SPECIALIZED INDUSTRIAL DISTRICTS AND HIGH-SKILL PRODUCTION

EMILIA ROMAGNA

INTERNATIONALLY RECOGNIZED FOR MECHANICAL EXCELLENCE AND INDUSTRIAL TECHNOLOGY

MARCHE

EXPORT-ORIENTED PRODUCTION BUILT ON STRONG SME NETWORKS

GENOVA • ANCONA • BOLOGNA • BRESCIA • CATANIA • LIVORNO • MILANO • NAPOLI • UDINE • VERONA

OCEAN FREIGHT

Aprile manages global ocean shipments through established partnerships with major carriers and strategic port operators. Our teams coordinate every stage of the process, ensuring **smooth documentation**, **reliable scheduling**, and **full visibility** from origin to destination.

ADVANTAGES

- **Cost-effective** solution for large volumes and long-distance cargo
- **Wide range of equipment options** for oversized, bulk, and special cargo requirements
- **Lower environmental impact** compared to other transport modes





AIR FREIGHT

Aprile provides fast and secure air transport for time-sensitive, high-value, and critical shipments. As an **IATA agent**, our teams work closely with airlines and specialized providers to ensure priority handling, reliable transit, and full shipment visibility.

ADVANTAGES

- **Fastest transit** times for urgent deliveries
- **High security** with minimal handling
- Predictable scheduling for **time-critical cargo**

SERVICES

- Regular consolidated services
- Air chartering
- Garments On Hangers (GOH)
- High Value and Time Sensitive (HVTS) shipments
- Carry-on shipments
- Aircraft On Ground (AOG) support
- Temperature-control for pharma and food



OVERLAND

Aprile provides **road transport solutions across Europe, the CIS, Africa, and the Middle East.** Working with trusted partners and certified carriers, we coordinate standard and exceptional transports while ensuring compliance with regional regulations and customs requirements.

ADVANTAGES

- **Direct routing** for regional and cross-border deliveries
- **Flexible options** for standard and oversized cargo
- **Full compliance support** for safe and reliable transit

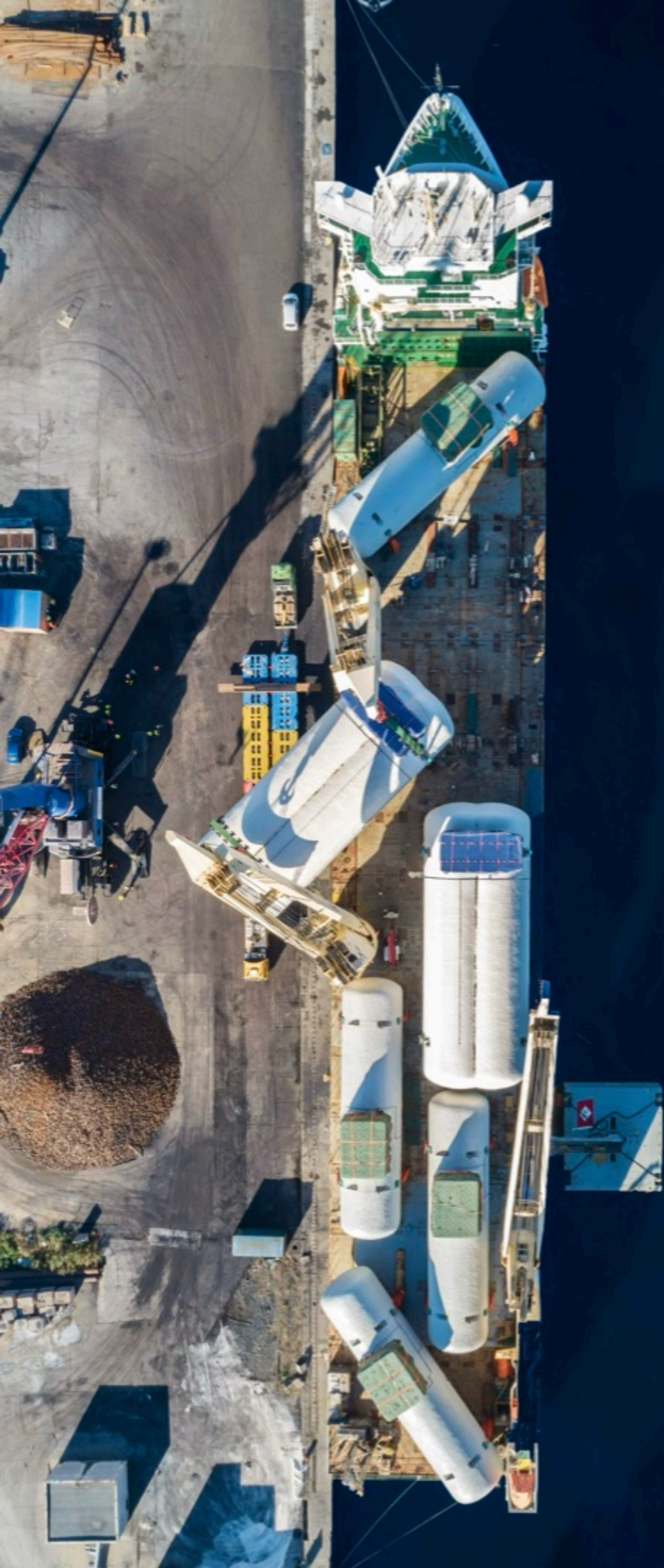
INTERMODAL

Aprile offers reliable intermodal solutions that combine road, rail, and short-sea transport to create **efficient and secure alternatives to road-only services**. As a market leader on the Italy to United Kingdom trade lane for more than 13 years, we provide stable capacity and consistent performance for a wide range of cargo needs.

ADVANTAGES

- **Reduced** exposure to road congestion and **delays**
- **Seamless coordination** across multiple modes for smoother long-distance movements
- Stable capacity and **consistent performance** on high-demand corridors





PROJECT CARGO

Aprile manages the logistics of oversized, heavy, and complex industrial cargo, supporting major projects in sectors including **oil and gas, petrochemical, steel, manufacturing,** and **construction.** Our specialists coordinate engineering studies, routing, vendor alignment, and on-site handling to ensure safe and efficient execution.

ADVANTAGES

- Custom **engineering, route planning,** and **risk assessment**
- Dedicated **project teams** for operational control and supervision
- **Proven expertise** with oversized, heavy-lift, and high-value industrial cargo

A hand is shown in silhouette, holding a glowing, bright orange and yellow orb. The background is a warm, golden sunset or sunrise sky. The overall mood is one of trust and protection.

INSURANCE BROKERAGE

Aprile supports customers in securing the right protection for their shipments through **trusted global insurance brokers and providers**. Our team helps identify suitable coverage based on cargo type and risk profile, offering guidance throughout the insurance and claims process.

ADVANTAGES

- **Tailored recommendations** in partnership with qualified brokers
- **Assistance** with documentation and claims handling
- Added **reassurance** for high-value, sensitive, or time-critical cargo

QUALITY AND COMPLIANCE

Aprile operates under an integrated Quality, Environment, and Occupational Health and Safety management system. Our processes are certified under **ISO 9001:2015, ISO 14001:2015, and ISO 45001:2018**, ensuring consistent service standards and safe, compliant operations across our network.





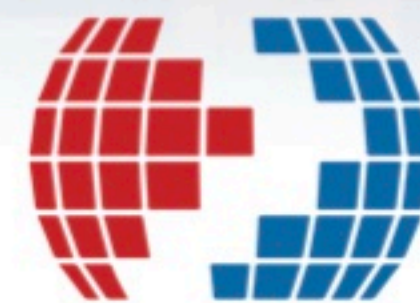
ETHICS AND INTEGRITY

Aprile operates with **integrity, transparency,** and **full respect for people.** Our Code of Ethics sets clear standards for how we work with customers, partners, and colleagues, **promoting fairness, diversity, and non-discrimination** across all activities.

We apply defined governance practices and internal controls that support responsible behavior, safeguard our operations, and ensure that ethical conduct remains central to our daily work.

CERTIFIED AND AUTHORISED

Our certifications and authorisations reflect recognized standards and official approvals that support **compliant, reliable, and responsible logistics operations** across our organization.





50 YEARS AND COUNTING

For five decades, Aprile has supported global supply chains with reliable, coordinated logistics. Our experience and international presence allow us to manage diverse and evolving customer needs with **confidence and care**.

We remain committed to continuous improvement, clear communication, and solutions that simplify the logistics journey. Whatever the destination, **our teams** work to **deliver the consistency and support our customers rely on to keep their business moving**.



APRILE 50
YEARS OF EXCELLENCE